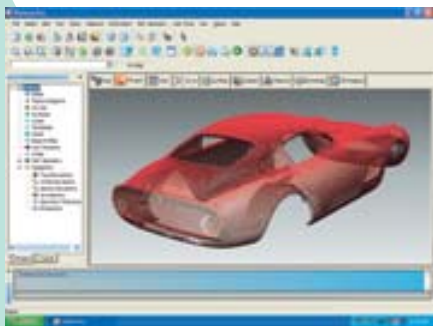
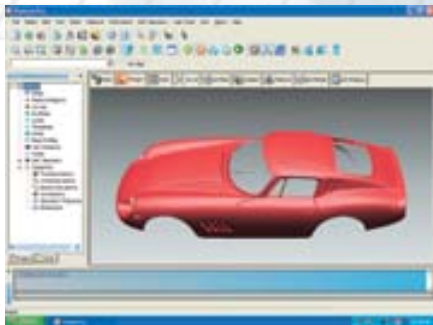


3D LASER SCANNER

LPX-1200

Quickly and Accurately Converts Physical Objects into 3D Models
Complete, User-Friendly System — Scanner and Reverse Modeling Software



Features:

- Fast and accurate non-contact laser sensor
- Easy operation with Dr. PICZA3 operating software and USB connection
- Pixform Pro professional reverse modeling software included
- Supports robust polygon to NURB surface conversion
- Converts objects into 3D data at highly-accurate 0.1mm (0.0039") pitch
- Scans objects up to 130mm (5") in diameter and 203.2mm (8") high

LPX-1200 Specifications

	LPX-1200
Table size	Diameter 130 mm (10 in.)
Maximum scanning area	Plane scanning: Width 130 mm (5 in.), height 203.2 mm (8 in.) Rotary scanning: Diameter 130 mm (5 in.), height 203.2 mm (8 in.)
Scanning pitch	Plane scanning: width direction 0.1 to 130 mm, height direction 0.1 to 203.2 mm Rotary scanning: circumference 0.18 to 3.6 degrees, height direction 0.1 to 203.2 mm
Repeat accuracy	±0.05mm (This figure reflects standard scanning conditions established by Roland DG.)
Maximum table load weight	5 kg
Interface	USB interface (compliant with Universal Serial Bus Specification Revision 1.1)
Power supply	Dedicated AC adapter Input: AC 100 to 240 V ±10% 50/60 Hz 1.0A Output: DC 19 V, 2.1 A
Power consumption	Approx. 20W (including AC adapter)
Dimensions	443 [W] X 396 [D] X 609 [H] mm (17-7/16 [W] X 15- 9/16 [D] X 24 [H] in.)
Weight	35 kg
Environment	Temperature: 10 to 40°C (50 to 104°F) (25°C [77°F] or more recommended) Humidity: 35 to 80% (no condensation)
Included items	AC adapter, power cord, CD-ROM, clay, user's manual, Roland Pixform Pro

System Requirements for the Software

	Dr. PICZA and 3D Editor	Pixform Pro
Operating system	Windows XP/2000/Me/98	Windows XP/2000/Me/98/NT4.0 (SP6 or higher)
CPU	Pentium II or higher	Pentium or AMD Athlon
Memory	128 MB or more	512 MB or more (1GB or more is recommended)
Free hard-disk space required for installation	Dr.PICZA3: 20 MB or more 3D Editor: 10 MB or more	800 MB or more (Additional 400 MB for tutorial sample files)

Roland reserves the right to make changes in specifications, materials or accessories without notice. Your actual output may vary. For optimum output quality, periodic maintenance to critical components may be required. Please contact your Roland dealer for details. No guarantee or warranty is implied other than expressly stated. Roland shall not be liable for any incidental or consequential damages, whether foreseeable or not, caused by defects in such products.

All trademarks are the property of their respective owners.



Roland®

AUTHORIZED DEALER:

Printed in Japan. RDG90282 '04 MAR. A-4 S-S

www.rolanddg.com